

## CASE STUDY

# Amsted Digital Solutions plays role in reducing Perrier carbon footprint

## PROJECT BACKGROUND

A new railway line linking the Perrier Vergèze factory and the port of Fos-sur-Mer in France was inaugurated in October, 2018. It promises to allow Perrier, a part of Nestlé Waters, to:

### TAKE



transport trucks off the road annually

### CUT

CO2 emissions dramatically-by



tons a year

### LOWER

noise pollution



This improved environmental sustainability was made possible, in part, through Amsted Digital Solutions providing greater supply chain digitization and enhanced asset visibility.

## KEY BENEFITS

### Greater visibility

Every Perrier freight train comes equipped with advanced Amsted Digital Solutions tracking technology through a partnership with railcar leaser, Ermewa SA. Geo-location sensors will enable parent company Nestlé Waters and its forwarder Bolloré Logistics to access:

- The position of the wagons
- The entrance/exits of the sites
- The Estimated Time of Arrival (coming soon)



*We are pleased to be the chosen telematics partner in this exciting new freight rail expansion project. With our digital platform and IoT devices, Perrier now has unrivaled visibility and control throughout the shipment process.*

- John Felty, Managing Director of Amsted Digital Solutions SAS

### Greater productivity

Enhanced visibility will also pay dividends in heightened productivity for parent company Nestlé Waters. Ermewa SA leased railcars come equipped with onboard devices from Amsted Digital Solutions that can deliver critical data and actionable intelligence through the Supply Chain Visibility™ platform, including delay notifications every 15 minutes.

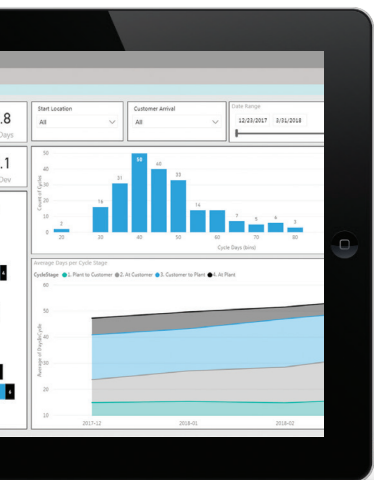
### Greener planet

By combining leading-edge hardware and software into an easy-to-deploy platform, Amsted Digital Solutions is helping companies like Nestlé Waters maximize asset utilization, status, and health – all while protecting the environment.

# 100%

*increase in cargo handling using exactly the same number of wagons due to digitization and data integration.*

## AMSTED DIGITAL SOLUTIONS



### Leading the way in telematics solutions for freight rail

Amsted Digital Solutions is at the forefront in providing predictive maintenance for freight rail. Using wireless sensors installed on components, our data-driven algorithms let us achieve condition-based maintenance systems that can save millions a year in maintenance costs, while extending product life and improving supply chain flows.



The end-to-end platform for global fleet visibility

[amsteddigital.com](http://amsteddigital.com)